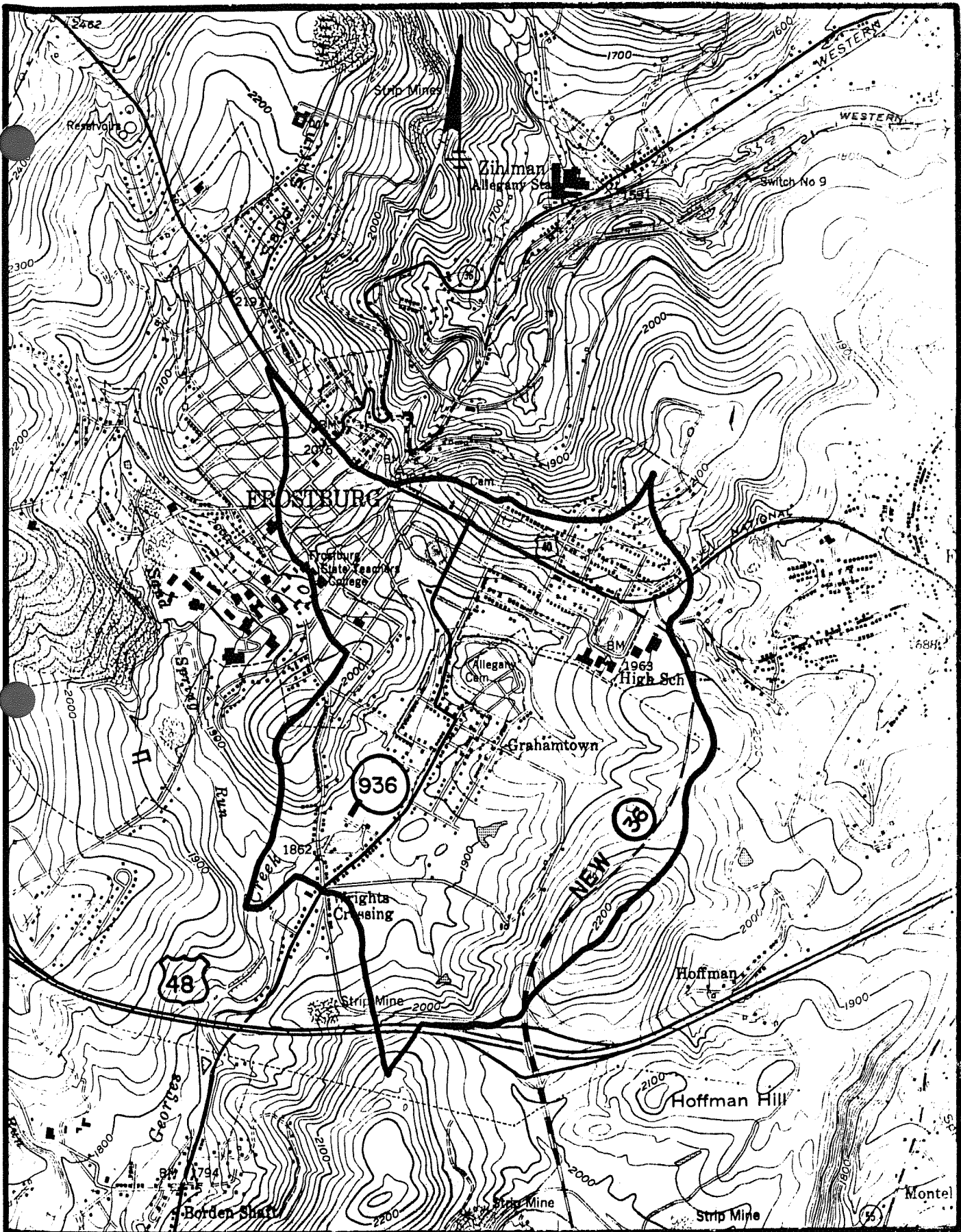


APPENDIX A - FIGURES



**UPPER GEORGES CREEK  
WATERSHED**

**VICINITY MAP**

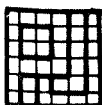
2000 0 2000



SCALE: 1" = 2000'

FIGURE

1



**PURDUM & JESCHKE  
CONSULTING ENGINEERS**  
1029 N. CALVERT STREET  
BALTIMORE, MARYLAND 21202

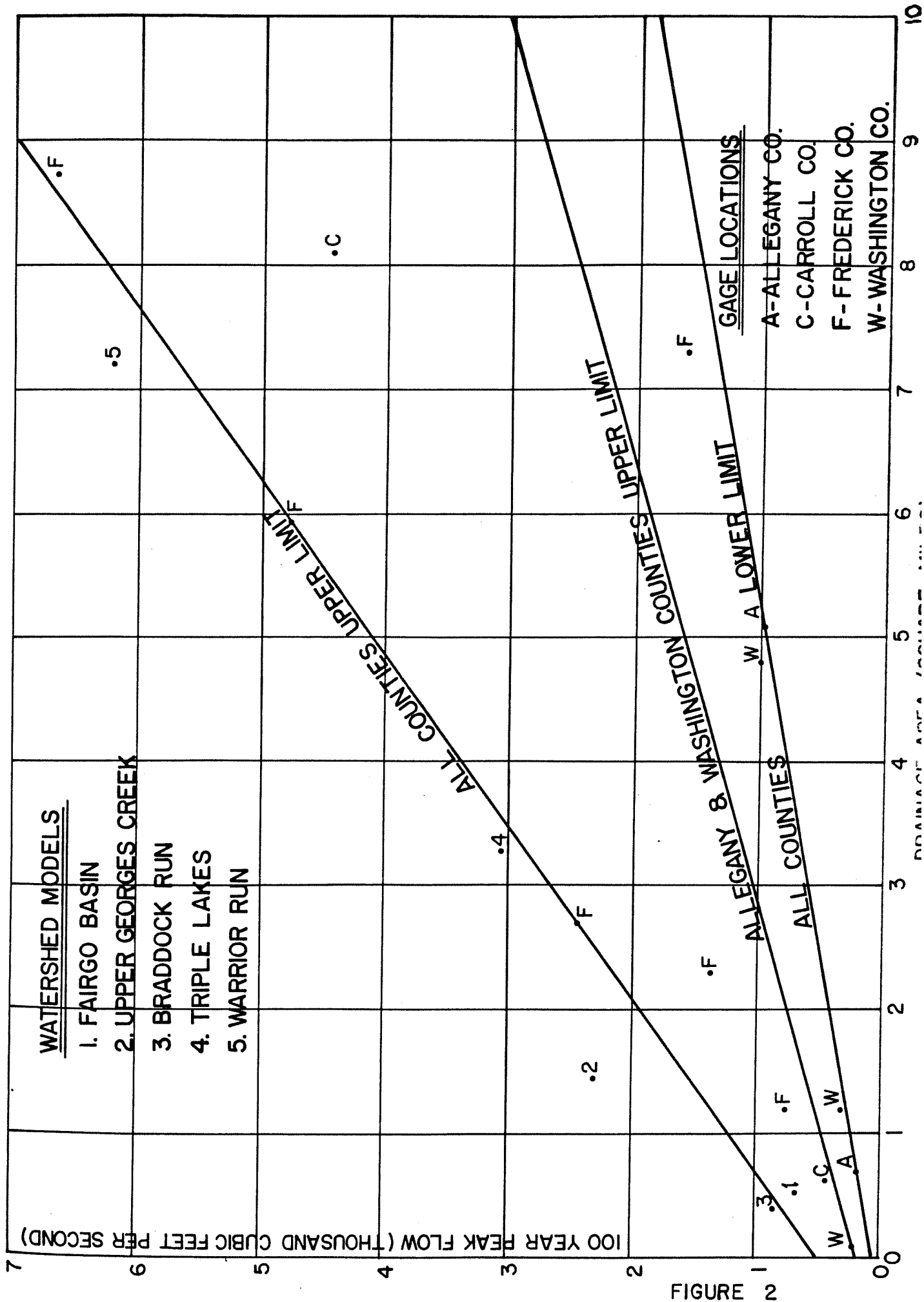


FIGURE 2

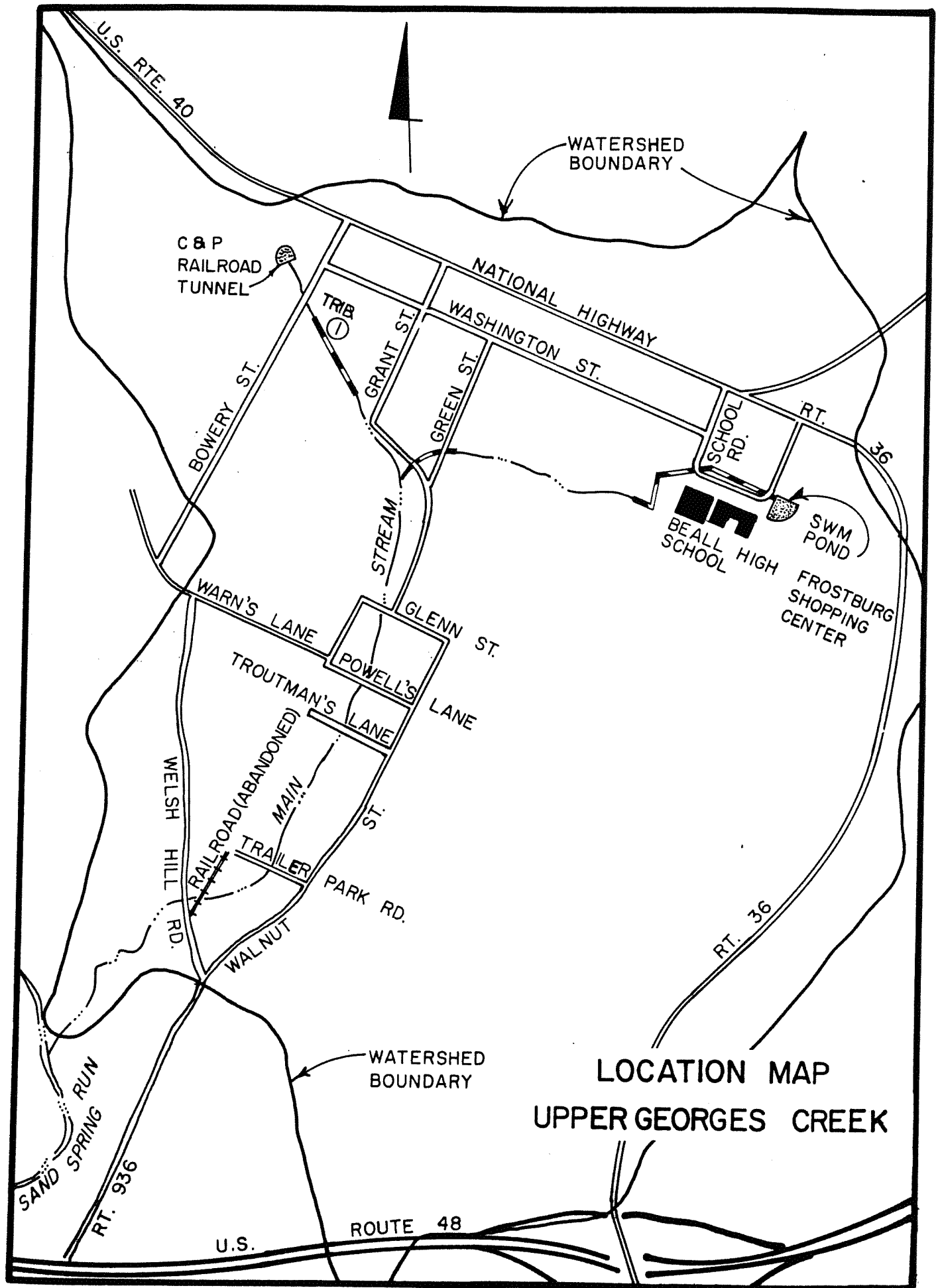
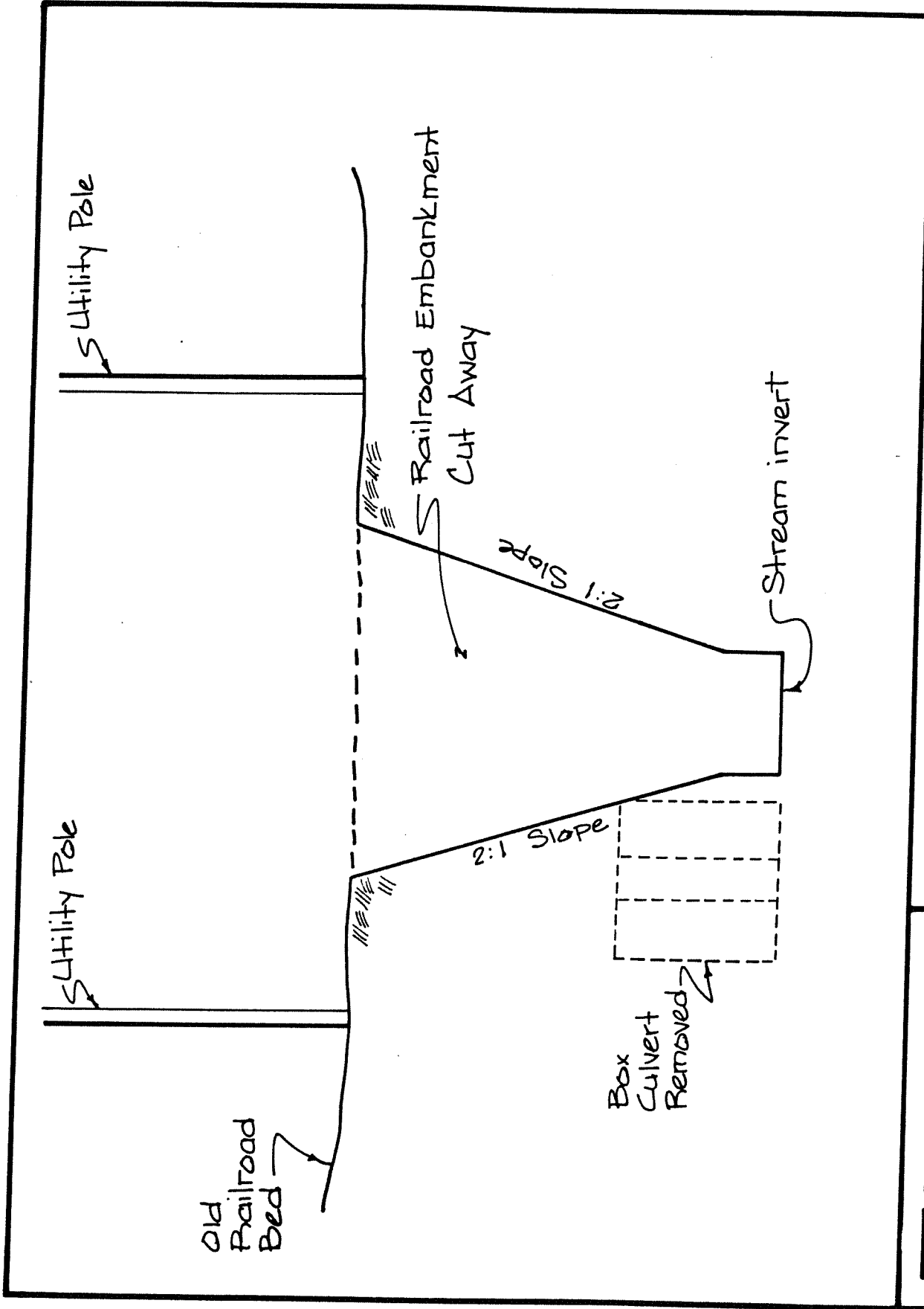
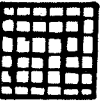
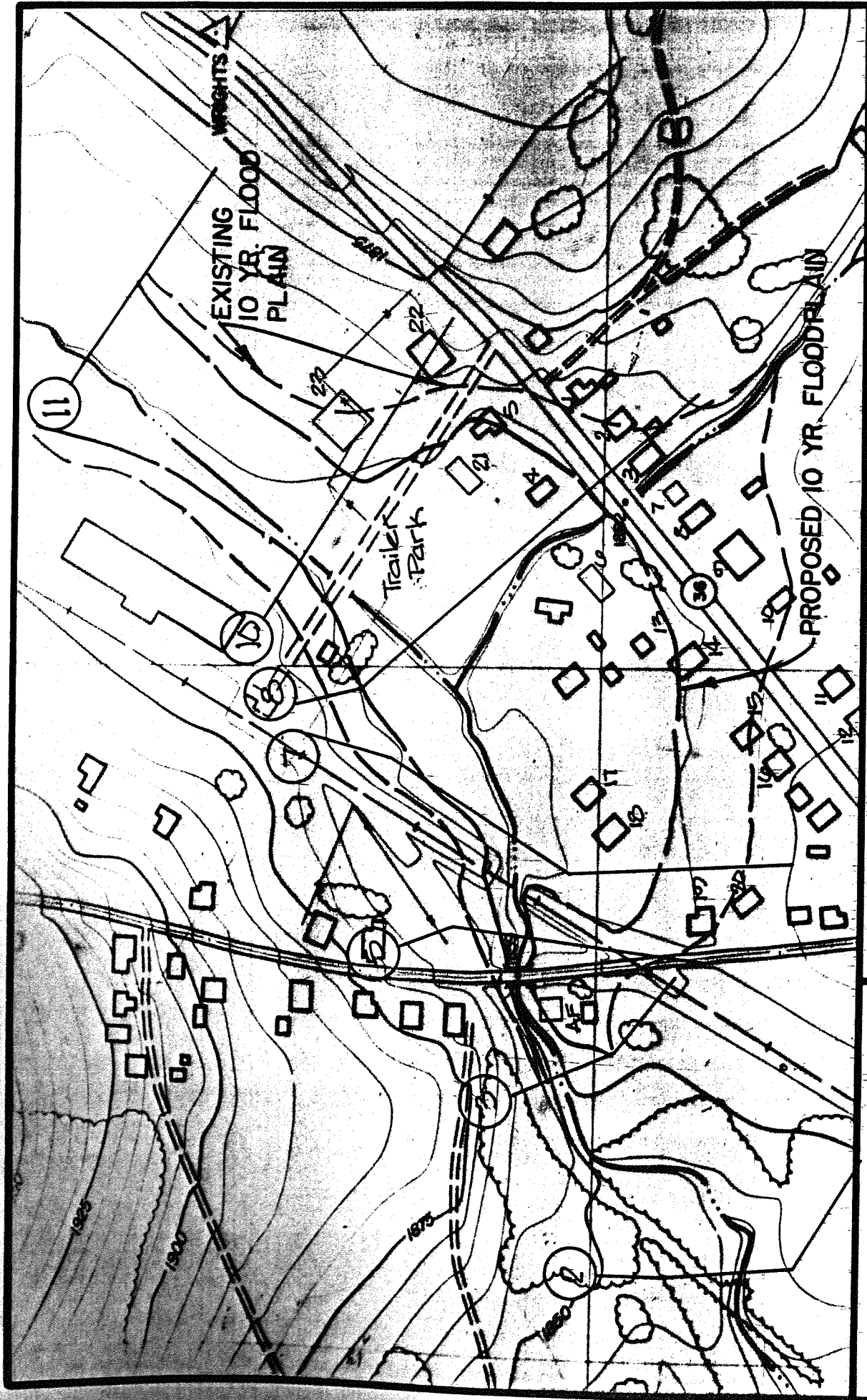


FIGURE 3



UPPER GEORGES CREEK  
 PROPOSED IMPROVEMENTS  
 REMOVAL OF RAILROAD CULVERTS & EMBANKMENT CUT AWAY

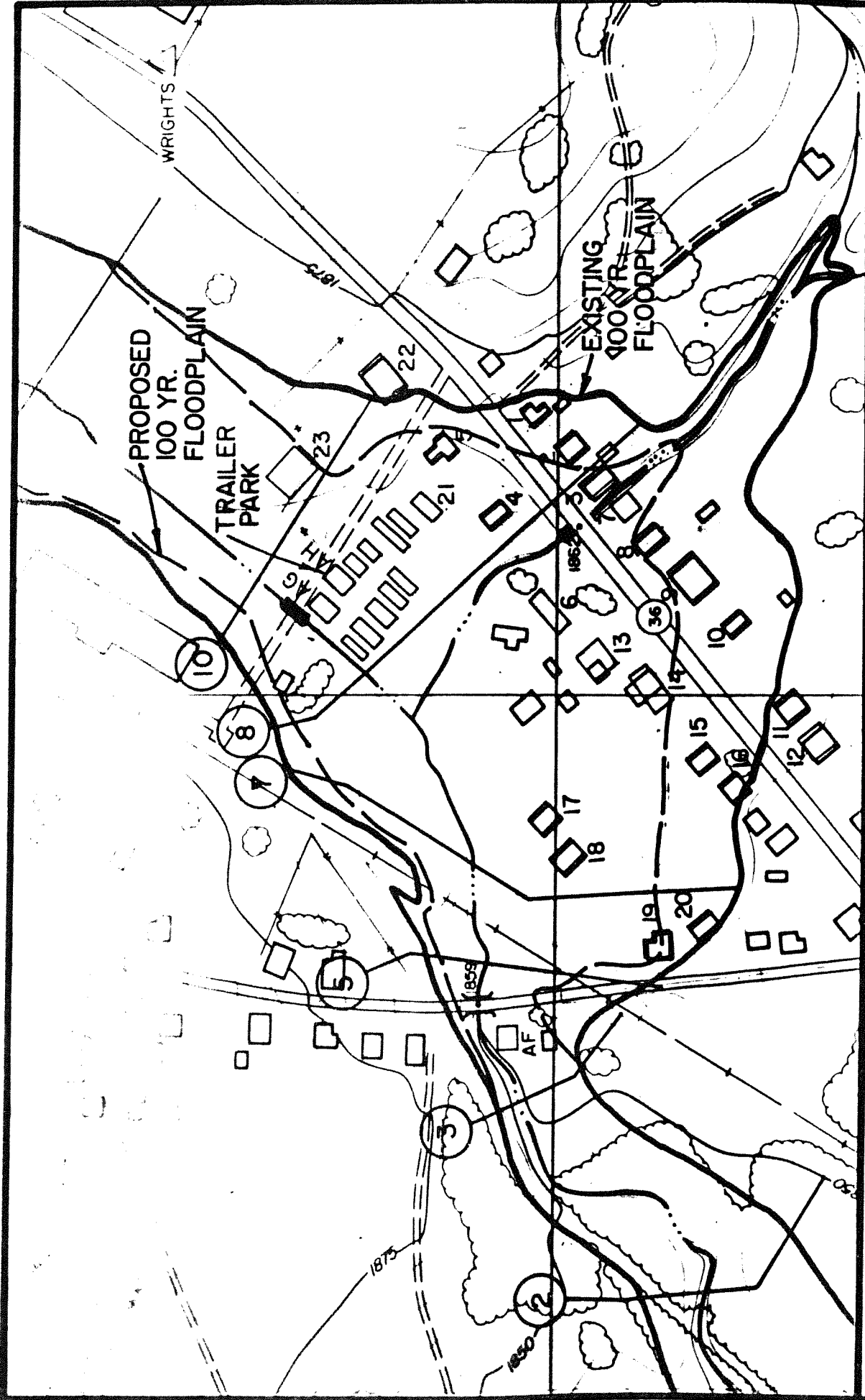
 PURDUM & JESCHKE  
 CONSULTING ENGINEERS  
 1029 N. CALVERT STREET  
 BALTIMORE, MARYLAND 21202



PURDUM & JESCHKE  
 CONSULTING ENGINEERS  
 1029 N CALVERT STREET  
 BALTIMORE, MARYLAND 21202

UPPER GEORGES CREEK  
 REDUCTION OF 10 YEAR FLOODPLAIN  
 WELSH HILL ROAD & R/R IMPROVEMENTS

FIGURE 5



UPPER GEORGES CREEK  
 REDUCTION OF 100 YEAR FLOODPLAIN  
 WELSH HILL ROAD & R/R IMPROVEMENTS

PURDUM & JESCHKE  
 CONSULTING ENGINEERS  
 1029 N. CALVERT STREET  
 BALTIMORE, MARYLAND 21202

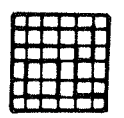
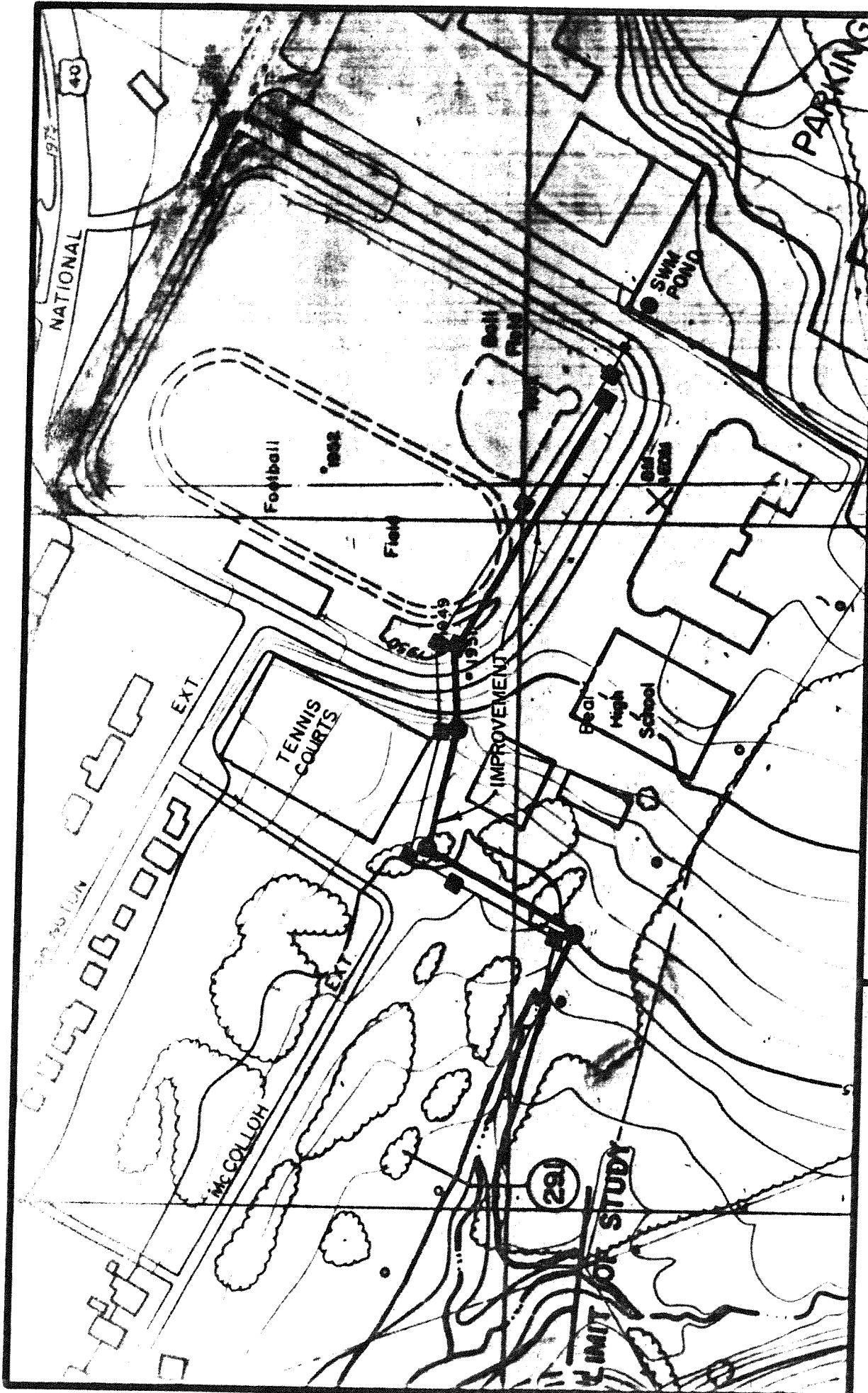
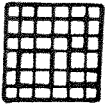


FIGURE 6




 PURDUM & JESCHKE  
 CONSULTING ENGINEERS  
 1029 N. CALVERT STREET  
 BALTIMORE, MARYLAND 21202

UPPER GEORGES CREEK  
 PROPOSED IMPROVEMENTS  
 PROPOSED PARALLEL 60" STORMDRAIN

FIGURE 7